

Winter Solstice: Manifesting Your Year: 2015

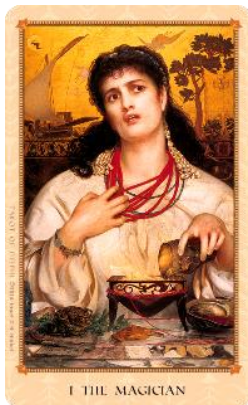
As the light begins to grow so do our intentions... using the Major Arcana as a guide, what do you plan on manifesting this year?

The Fool



I manifest a new beginning in the following areas of my life:

The Magician



I manifest my creative vision by doing:

The High Priestess

The High Priestess



I manifest a deeper intuitive self by enacting:

The Empress



I manifest self-care by nurturing:



The Emperor

I manifest an orderly community by upholding:

The Hierophant



I manifest a spiritual tradition by ritualizing:

The Lovers



I manifest passionate love by opening:

The Chariot



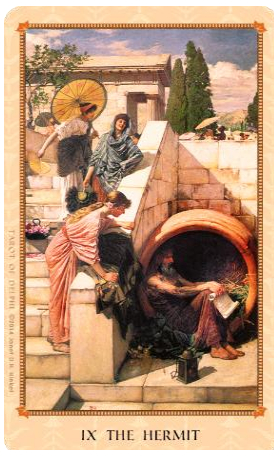
I manifest goal creation by planning:

Strength



I manifest physical health and well-being by cultivating:

The Hermit



I manifest wisdom and focus by denying:

The Wheel of Fortune



I manifest an acceptance of the things I cannot change by contemplating:

Well done!

As the Light grows from today until reaching its zenith in the summer, a manifestation map is a guideline to help you create the life you want in conjunction with the energy of a growing year.

At the Summer solstice, when we go into a period of culling and self-reflection, we will create a map with the rest of the Major Arcana.

I hope you allow this small Map of Manifestation to keep you on course for the first half of the year, if you feel uncertain, confused or a bit off track pull this handy Manifestation Map out to remind yourself of your intentions at the winter solstice.

Happy Manifesting!